

KLY-HT-KY03-0L4E series serial port current sensor uses RS-485 bus photoelectric isolation communication technology, using the MODBUS-RTU standard communication protocol to realize the master-slave communication control mode. You can connect up to 32 models of this product on the same bus (if you need more slave nodes, you can customize the company). In order to ensure stable and reliable customers using this product, the company recommended the use of customers 9600 baud rate.

KLY-HT-KY03-0L4E系列串口式电流传感器采用RS-485总线光电隔离通信技术, 使用MODBUS-RTU标准通讯协议, 实现了主从通讯的控制方式。可以在同一条总线上最多连接32个此型号产品(用户如需更多从机节点, 可向公司定制)。为保证客户稳定可靠运用此款产品, 公司推荐客户使用9600波特率。

Products Features

- Easy mounting
- No insertion losses
- High immunity to external interference
- Output cable length can be customized

Applications

- Power grid monitoring
- AC variable speed drives
- Battery supplied applications
- Uninterruptible Power Supplies
- Switched Mode Power Supplies
- Power supplies for welding applications

产品特点

- 安装方便
- 无插入损耗
- 抗干扰能力强
- 输出电缆长度可定制

应用领域

- 电网检测
- 交流变频调速器
- 通讯电源
- 不间断电源(UPS)
- 开关电源(SMPS)
- 电焊机



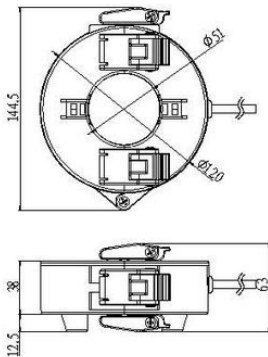
Instructions 使用说明

- Incorrect wiring may cause the damage of sensor.
1. 保证接线正确, 错误的接线可能会导致传感器损坏。
- When the measured current through the center hole of the sensor, the current will be measured at the output end.
2. 当待测电流通过传感器的穿心孔, 可在输出端测得电流大小。
- The dynamic performance (di/dt and the response time) is the best when the primary hole is fully filled with the bus bar.
3. 母排完全充满初级穿孔时动态表现(Di/dt和响应时间)为最佳。
- User can adjust the output extent of sensor if necessary.
4. 传感器输出幅度可根据用户需求进行适当的调节。
- Rated input current and output voltage of sensor can be customized.
5. 可按用户需求定制不同额定输入电流和输出电压的传感器。

Electrical Data(Ta=25°C 5°C)电气参数

Type型号	KLY-HT-KY03-0L4E						
Parameters参数							
Rated input 额定测量电流 I _{rn} AC	100A	150A	300A	500A	600A	800A	1000A
Measure range 测量范围 I _r AC	120A	180A	360A	600A	720A	960A	1200A
Output mode 输出方式	RS485						
Communication parameters 通信参数	地址:1; 波特率:9600bps; 无校验位; 两个停止位						
Precision grade 精度等级	< 1%						
Linearity 线性度 ε _L	@ I _p =0, 25°C < 1%FS						
Supply voltage 电源电压 DC	@ I _r =0 T _a = -40°C ~ +70°C 24V(±5%)						
Maximum transmission distance 传输最大距离	≤1.2km						
Current consumption 功耗电流 I _c	<60mA						
Response time 响应时间 TR	1s						
Operating temperature 工作环境温 TA	-30°C ~ +70°C						
Storage temperature 贮存环境温度 TS	-40°C ~ +85°C						
毛重(约)Mass(approx) m(不含导线)	1900g						
Protection grade 防护等级	IP67						
Standards 执行标准	JB/T 7490-2007						

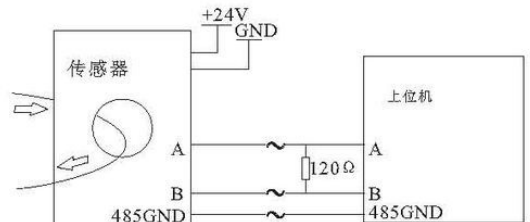
Mechanical Dimension(for Reference Only) 结构参数



电缆引线定义:

1. 红色 +24V
2. 黑色 GND
3. 白色 A
4. 黄色 B
5. 蓝色 485(GND)

Circuit Connection Diagram 电路连接示意图



Casing material 外壳材料: 符合UL94-V0